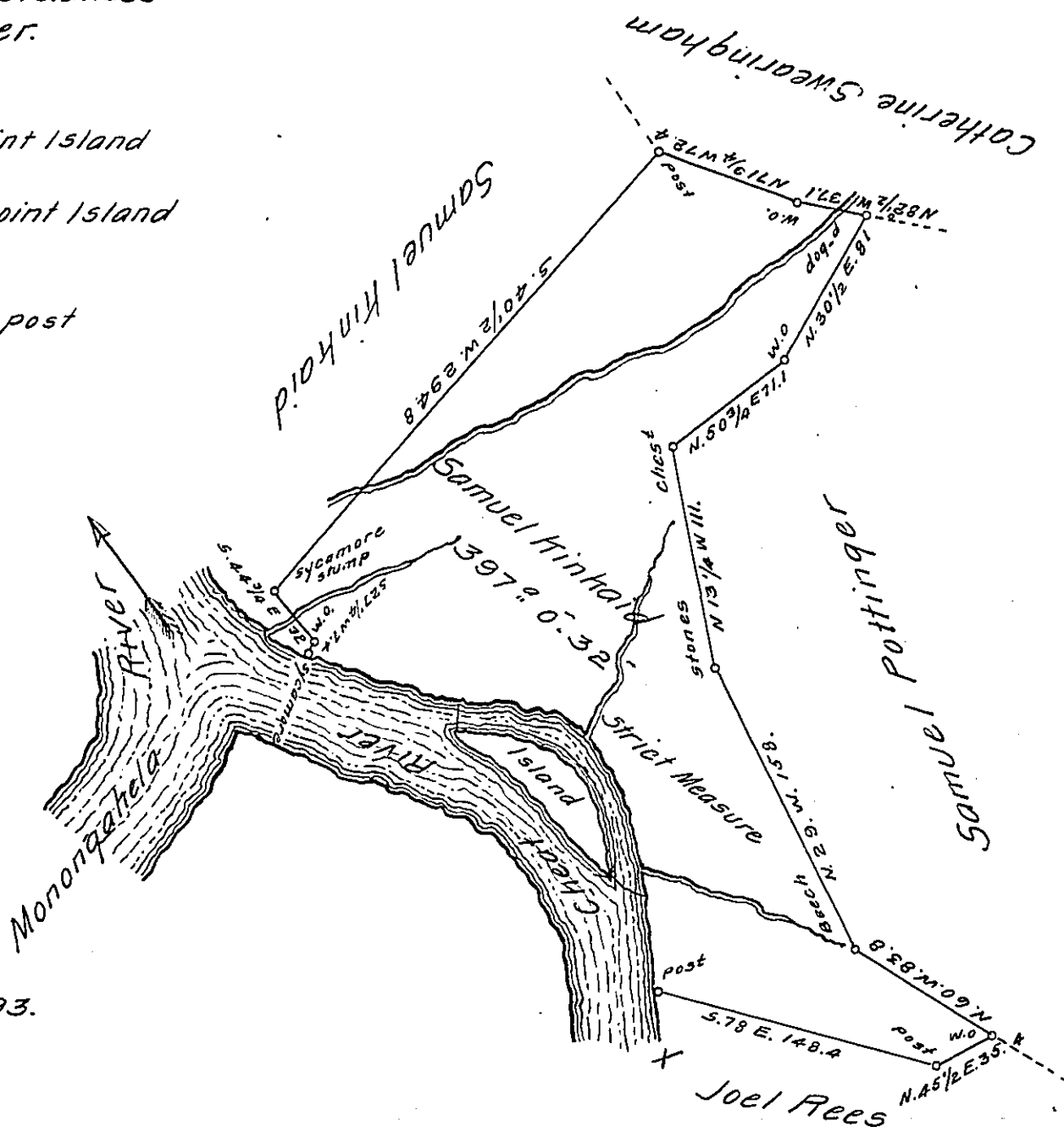


*Courses and Distances
up Cheat River.*

- S. 71 1/2 E. 52
- S. 77. E. 30.5
- S. 13 W. 14 point Island
- S. 61 E. 32.2
- S. 43 E. 75.6 point Island
- S. 61 1/2 E. 20.6
- S. 13. E. 54.7
- total to post
- total 279.6



Ret'd 11. Ap! 1793.

Situate on the East Side of Cheat River in Springhill Township Fayette County and Surveyed the 20th day of August 1786. In Consequence of a Certificate from the Commissioners appointed to settle and adjust the Claims to unpatented lands in the Counties of Monongalia, Yohogania and Ohio dated the 22^d day of February 1780.

Alexander Mclean, Deputy.-

*To Daniel Brodhead Esquire
Surveyor Generale*

IN TESTIMONY that the above is a copy of the original remaining on file in the Department of Internal Affairs of Pennsylvania, made conformably to an Act of Assembly approved the 16th day of February, 1833, I have hereunto set my Hand and caused the Seal of said Department to be affixed at Harrisburg, this nineteenth day of January 1912.

Henry Horick,
Secretary of Internal Affairs.